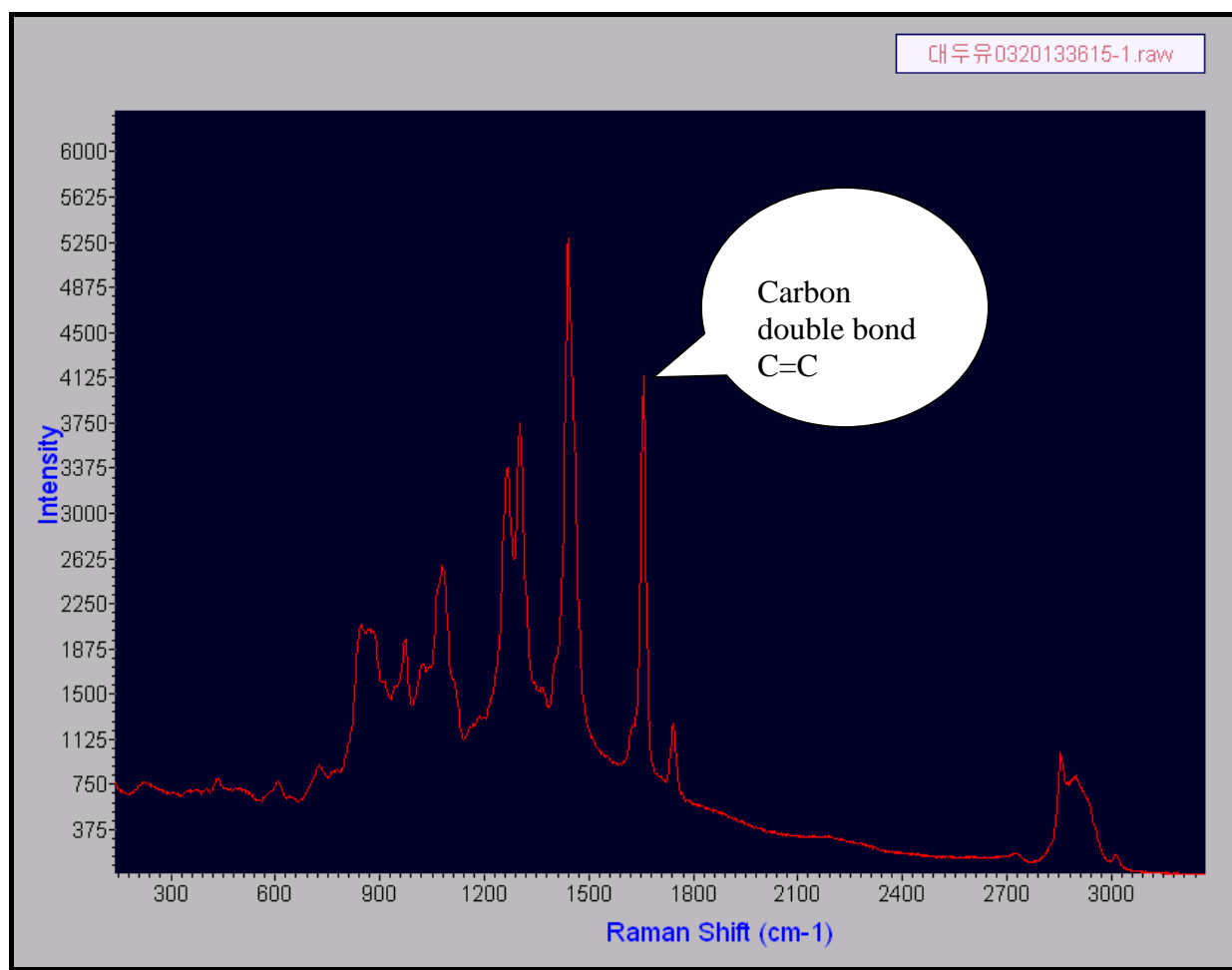


Sample

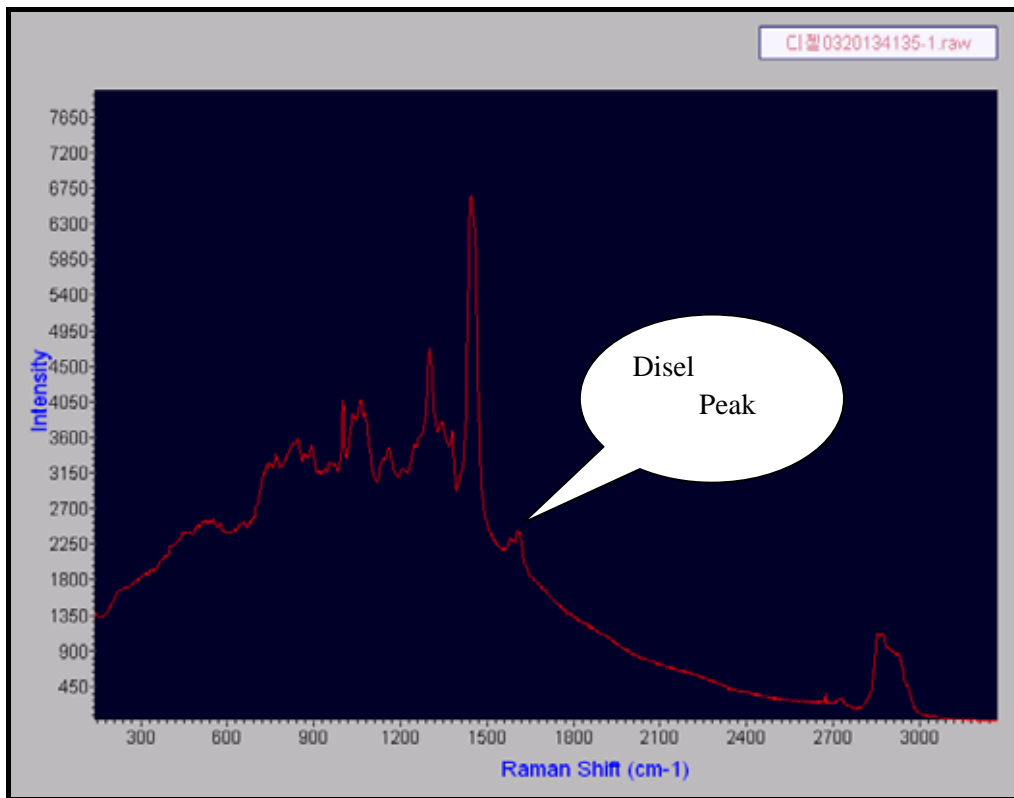
: Dispersive Raman Spectrometer
Lambda Solution Inc. Model : LSI Dimension P1 SR

Sample : Bio Diesel Oil Carbonyl

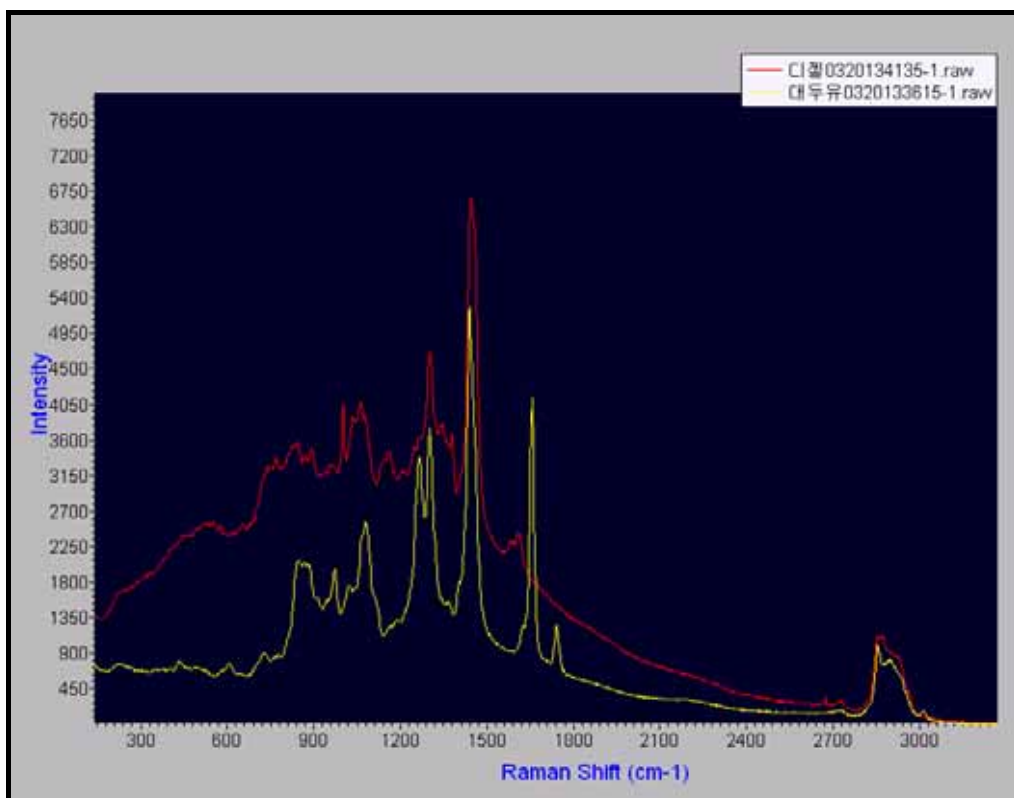
Spectrum A : Bio Diesel ()



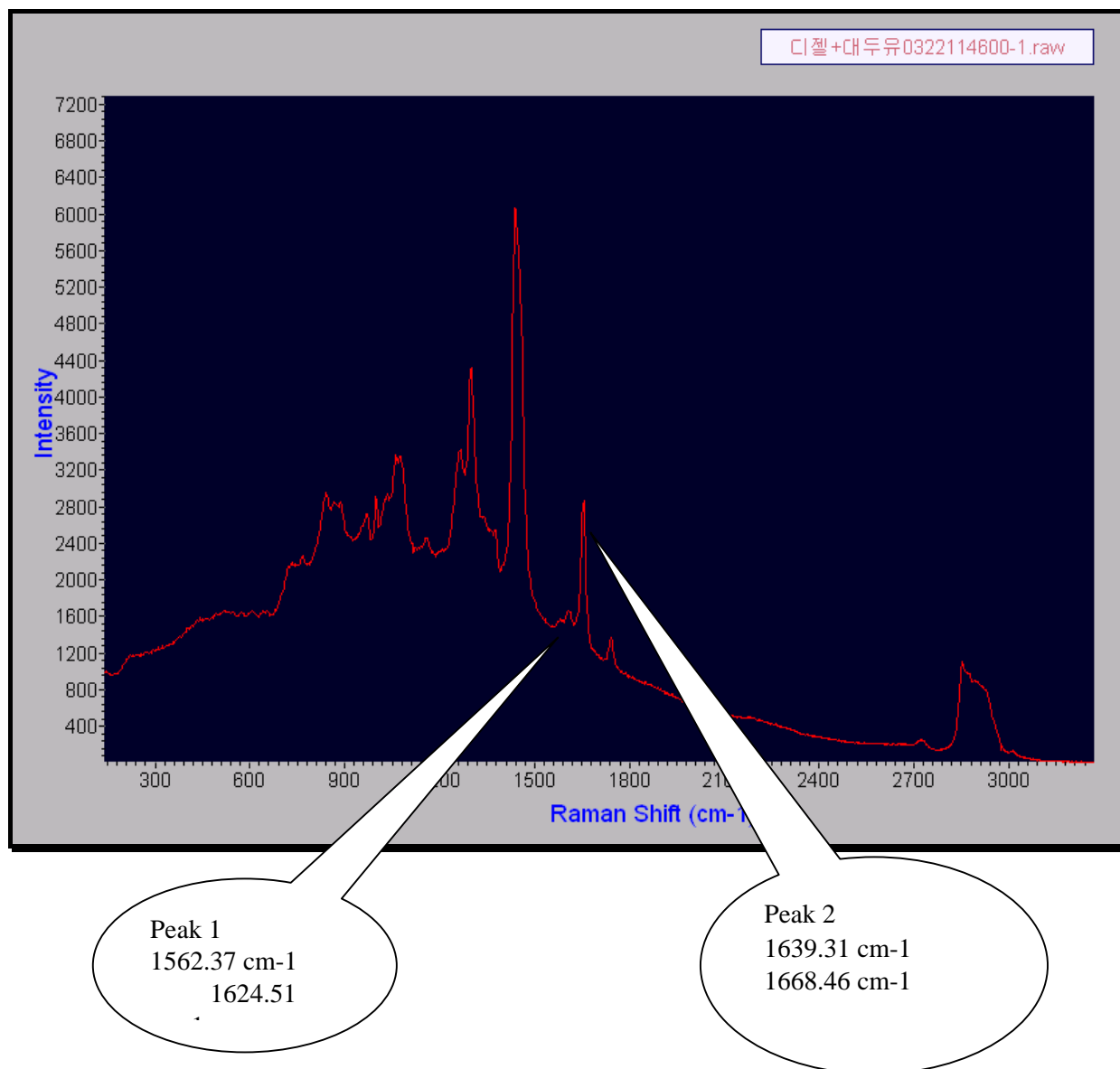
Spectrum B : Diesel



Spectrum C : Biodiesel Diesel Overlay

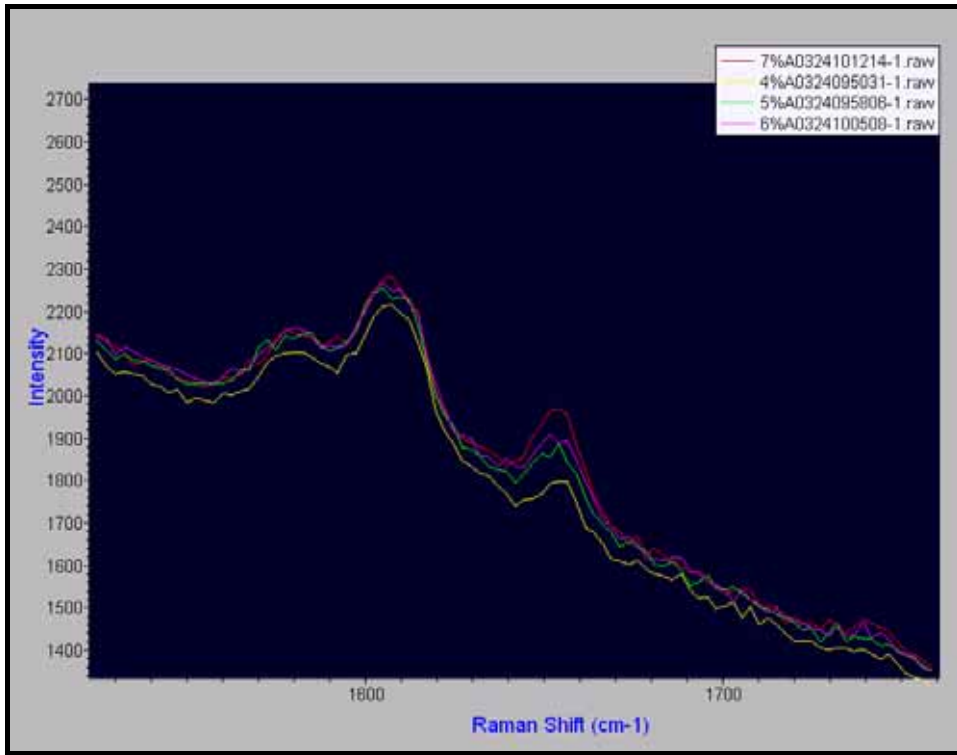


Spectrum D : Biodisel + Disel (50 : 50)



Calibration Curve Sample Spectra overlayed

4% Biodisel	3 vials
5% Biodisel	3 vials
6% Biodisel	3 vials
7% Biodisel	3 vials



File: Cali_Hyun2.txt

Date: 03/24/2006

Time: 11:35:01

Real Time Monitoring Sample Name: Oil

Normalized Peak Start Pos: 1562.370

Normalized Peak End Pos: 1624.510

Monitored Peak Start Pos: 1639.310

Monitored Peak End Pos: 1668.460

Monitoring Type (0 - Peak Intensity or 1 - Peak Area): 1

Fitting Order: 4

Concentration Calibration Coefficients 0: 6.87162e-001

Concentration Calibration Coefficients 1: 5.29410e+001

Concentration Calibration Coefficients 2: -4.16219e+002

Concentration Calibration Coefficients 3: 2.01978e+003

Concentration Calibration Coefficients 4: -3.27718e+003

Date Points For Concentration Calibration:

Index	Peak1	Peak2	Peak Ratio	Concentration
1	3280	430	0.131	4.00000
2	2997	393	0.131	4.00000
3	1948	242	0.124	4.00000
4	3482	616	0.177	5.00000
5	3855	652	0.169	5.00000
6	3586	670	0.187	5.00000
7	3095	712	0.230	6.00000
8	3477	775	0.223	6.00000
9	3529	735	0.208	6.00000
10	3474	1087	0.313	7.00000
11	3644	1059	0.291	7.00000
12	3816	971	0.255	7.00000

Sample

5% calibration sample

1 0.00 1.00000 / 0.18544

Index	Elapsed Time	Concentration	
1		0.000	5.196

6% calibration sample

1 0.00 1.00000 / 0.22033

Index	Elapsed Time	Concentration	
1		0.000	6.026

7% calibration sample

1 0.00 1.00000 / 0.29467

Index	Elapsed Time	Concentration	
1		0.000	7.117